

**PO BOX 995,  
ABU DHABI  
UNITED ARAB EMIRATES**

**TEL: +971 2 6984999  
FAX: +971 2 6659218  
EMAIL: [commercial@khalidfarajshipping.com](mailto:commercial@khalidfarajshipping.com)  
WEB: [www.khalidfarajshipping.com](http://www.khalidfarajshipping.com)**



## **WARDEH 1**

### **LANDING CRAFT**

<b>REGISTRATION</b>	
Type	Landing Craft
Flag	U.A.E.
Class	NKK
Built	2017
Official No.	0008411
Call sign	A6E3175
IMO No	9834765

<b>DIMENSIONS</b>	
Length Overall	68.00M
BEAM Moulded	16.00M
Depth Moulded	4.50M
Draft (Summer)	3.55M
Hull	Steel (Double Hull)
GRT	1418
NRT	426
DWT	1856.096 Tons

<b>PERFORMANCE</b>	
Speed	10 Knots (Free running)

<b>PROPULSION – MACHINERY</b>	
Main Engines	2 x Yanmar 6EY17W,837KW @1450RPM
Bow Thruster	Deutz BF6M1015MC,285KW @ 1800rpm
Generator	2 x Deutz 146KW and 1 x Cummins 80KW
Propeller	2 X Fixed Pitch Propellers

<b>CAPACITIES</b>	
Fuel Oil	1297 m3
Fresh Water	1209 tons
Clear Deck Area	745.09 m2
Deck Strength	10 T/m2
Bow Ramp (L x W)	7.72m + (Flap 1.64m) x 7.81m

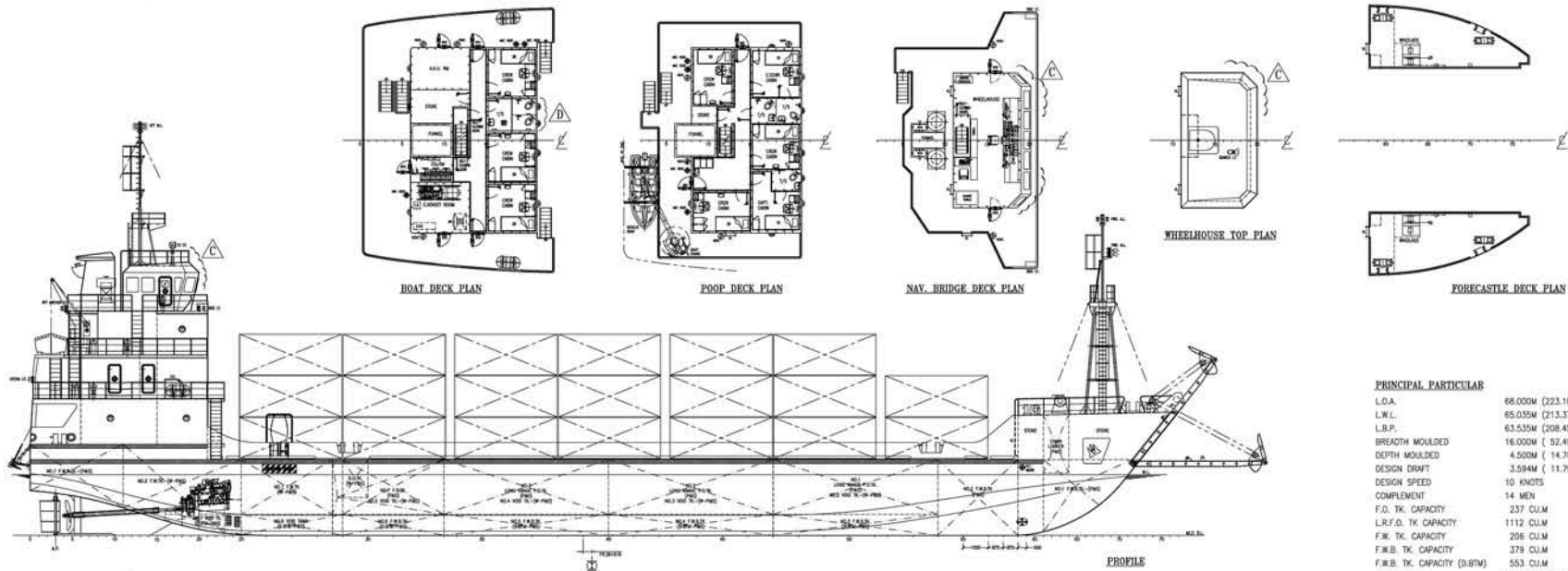
<b>ACCOMODATION</b>	
Centrally Air Conditioned	
Complement	14

<b>COMMUNICATION / NAVIGATION EQUIPMENT</b>	
VHF	FURUNO FM-8900S
SSB	FURUNO FS-1575
Radar	FURUNO FAR2117
GPS	FURUNO GP-170
Echo Sounder	FURUNO FE 800
NAVTEX	FURUNO NX- 700B
Magnetic Compass	DAIKOSR2-150PK
AIS	FURUNO FA-150
Auto Pilot	NAVITRON NT 951G
GYRO COMPASS	YOKOGAWA CMZ-900B
INMARSAT	FURUNO FELCOM-18

<b>LIFE SAVING &amp; FIRE FIGHTING</b>	
2 x 25 men Inflatable Life Raft	
Fire Fighting as per SOLAS	

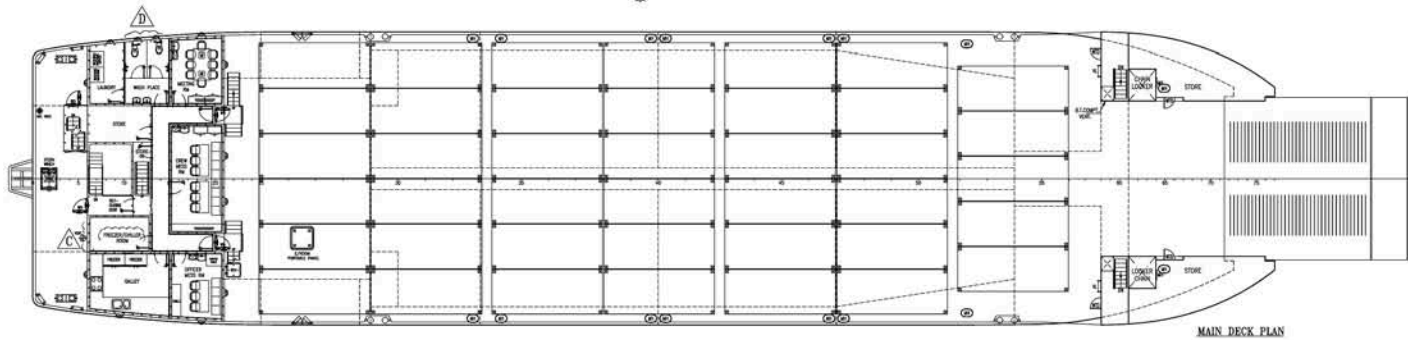
\* ALL DETAILS ABOUT

\*\* ALL DETAILS ARE BELIEVED TO BE CORRECT, BUT WITHOUT GUARANTEE

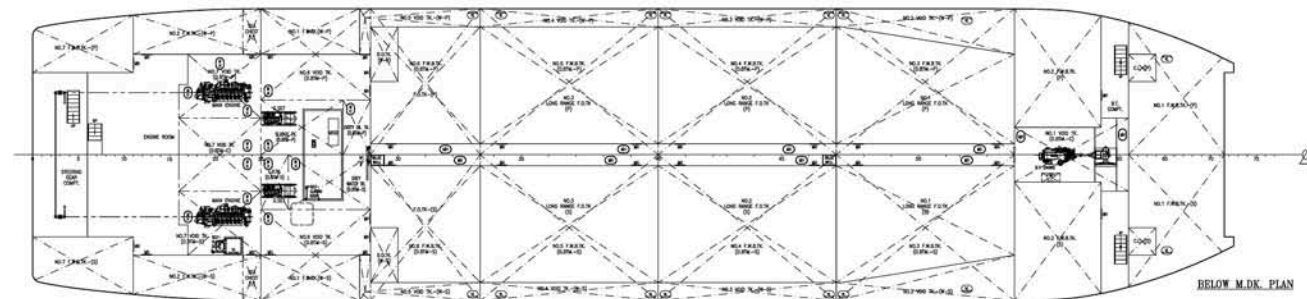


**PRINCIPAL PARTICULAR**

L.O.A.	68.000M (223.10FT)
L.W.L.	65.035M (213.37FT)
L.B.P.	63.535M (208.45FT)
BREADTH MOULDED	16.000M ( 52.49FT)
DEPTH MOULDED	4.500M ( 14.76FT)
DESIGN DRAFT	3.594M ( 11.78FT)
DESIGN SPEED	10 KNOTS
COMPLEMENT	14 MEN
F.O. TK. CAPACITY	237 C.U.M
L.R.F.D. TK. CAPACITY	1112 C.U.M
F.W. TK. CAPACITY	206 C.U.M
F.W.B. TK. CAPACITY	379 C.U.M
F.W.B. TK. CAPACITY (0.8TM)	553 C.U.M
MAIN ENGINE	YANMAR SEY17W 1138PS@1450RPM x 2 UNITS
GEAR BOX	RATIO 4.07 : 1
GENERATOR	130KW x 2 UNITS
FLAG	SINGAPORE
NAVIGATION AREA	UNRESTRICTED



- NOTES:**
- (A) "A" TO BE KEPT CLOSED AT THE SEA AND A PERMANENT NOTICE TO THIS EFFECT SHALL BE POSTED ON INNER SIDE OF THE DOOR.
  - (B) "B" TO BE KEPT CLOSED AT SEA AND SEPARATE INDICATOR LIGHTS AND AUDIBLE ALARMS ARE TO BE PROVIDED FOR THE INDICATOR BEHIND AND ON THE DRAWING PANEL TO SHOW THAT THIS DOOR IS CLOSED AND THAT ITS SECURING AND LOCKING DEVICES ARE PROPERLY POSITIONED.
  - (C) NOTICE TO BE AFFIXED ON BOTH SIDES OF THE DOOR: "TO BE KEPT CLOSED AT SEA"
  - (3) SIDE SCUTTLES ARE TO BE FITTED WITH EFFICIENT, HINGED INSIDE DEADLOCKS.
  - (5) FOR CONTAINER ARRANGEMENT PLEASE REFER TO SEPARATE DRAWING.
  - (6) MINIMUM SW HEIGHT AND RESIDUE SURFACTANT IS TO BE IN ACCORDANCE WITH ILL. 68.00 INDEXED TANK AND LEVEL REGULATOR IS TO BE PROVIDED. SEE ALTERNATIVE SPECIFY INSTRUCTIONS FROM THE PLAN IS TO BE OBTAINED AND COMPLIED WITH.
  - (7) PLEASE REFER TO THE PROVISION PLAN FOR THE SELF-CLOSING THE DOOR & THE DOOR, AND THE INTEGRITY OF BULKHEADS AND DECK.
- WTD = WEATHER TIGHT DOOR  
 WT = WEATHER TIGHT WINDOW  
 WT = WATER TIGHT DOOR



**FOR REFERENCE**

15.05.18	AMENDED AS PER BUILDER'S REQUEST.	B	T.K.MONG
23.05.19	AMEND AS PER BUILDER'S REQUEST, PROVISION SHOWN CHANGED TO FREEZER AND CHILLER ROOM NOTES ARE MODIFIED/ADDED.	C	T.K.MONG
05.05.20	MORE [C] IS ADDED, AS PER CLASS'S COMMENT.	B	LEE
DATE	MODIFICATION	REV	BY

SHIP  
**68M LANDING CRAFT**  
 TITLE  
**GENERAL ARRANGEMENT**

OWNER SHELLER		HULL NO. FM 133		DRAWING NO. REV.	
CLASS	NR	CHECKED	APPROVED	SCALE	ISS
15.05.14	20.05.14	T.K.MONG	(A1)	1:125	05/890-01

This Drawing and the information contained herein is supplied on the understanding that this are the exclusive property of UNITED SHIP DESIGN Sdn Bhd. They must not be used or reproduced in whole or in part without permission in writing.