

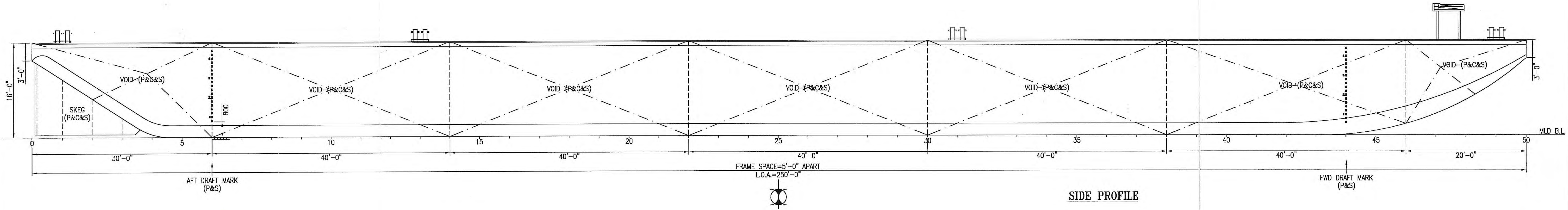


HARMYAH

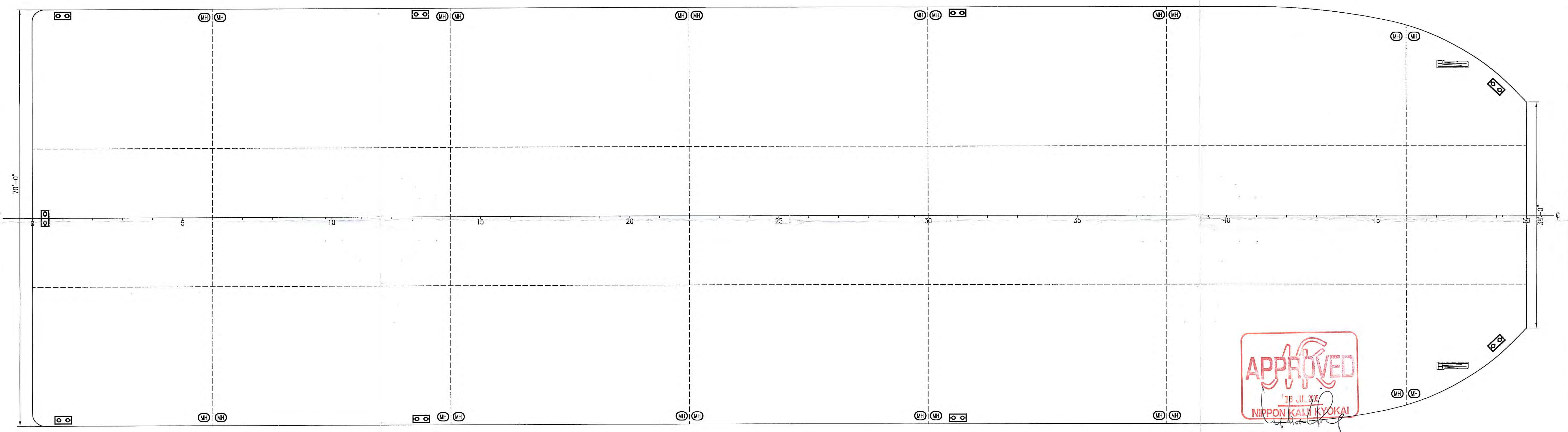
Vessel Name	HARMYAH
Vessel Type	Dump Barge
Year of Built	2005
Place of Built	Malaysia
Flag	UAE
Port of Registry	ABU DHABI
Official NO.	5112
Class	BV
Length Overall	76.2M
Length BP	73.15 M
Breadth Overall	21.34 M
Depth Molded	4.88M
Full load Draft	3.776 M
GRT	1957T
NRT	588T
Loaded Displacement	5670.91 T
Dead Weight	4670.44 T

* ALL DETAILS ABOUT

** ALL DETAILS ARE BELIEVED TO BE CORRECT, BUT WITHOUT GUARANTEE



SIDE PROFILE



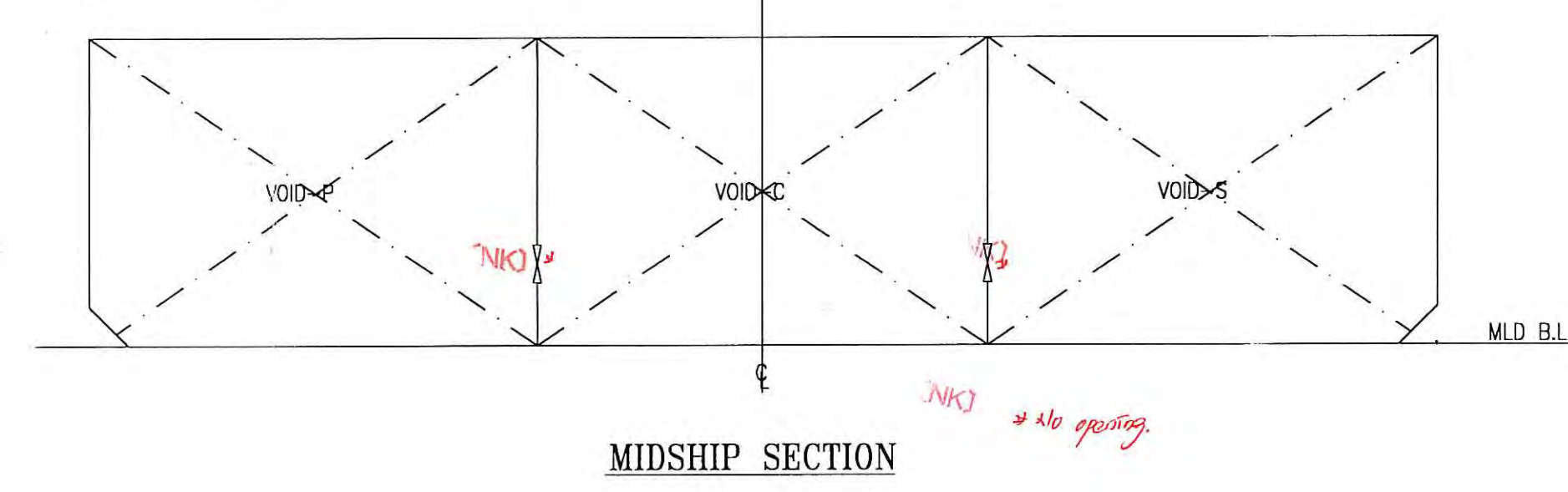
MAIN DECK PLAN

(NK) 3 copies of Preliminary Stability Booklet are to be submitted in accordance with Part B 2.1.2.3 of Guidance for the Survey and Construction of Steel Ships.

(NK) Loading manual to be submitted

(NK) Designed Max. Towing Speed: 8 knots

(NK) Pending
The longitudinal bending moments in still water, M_s for section modulus of hull girder, to be submitted.



MIDSHIP SECTION

PRINCIPAL PARTICULAR

LENGTH OVERALL	76.200M (250'-0")
BREADTH MLD	21.336M (70'-0")
DEPTH MLD	4.877M (16'-0")
DRAFT MLD	3.962M (13'-0")
(NK) L by NK Rules:	76.200M
(NK) ds:	4.150M

(NK) Deck Load = 9.41 t/m²



REGIONAL MANAGER
SOUTH ASIA AND OCEANIA

(NK) With Remarks in Red

FOR APPROVAL

DATE	MODIFICATION	REV	BY

UNITED SHIP DESIGN (NAVAL ARCHITECTS)
NO. 1, 2ND FLOOR, LANE 9, KAMPONG DATU ROAD, 96000 SIBU, SARAWAK, MALAYSIA.
TEL : 084-325825, FAX : 084-333825
E-MAIL : usdesign@tm.net.my

SHIP
250'x70'x16' DUMB BARGE "HARM YAH"

TITLE
GENERAL ARRANGEMENT

OWNER	SHIN YANG SHIPYARD SDN. BHD.	YD NO. 201
BUILDER	NK	SCALE
CLASS	CHECKED	APPROVED
DRAWN	TK.WONG	DRAWING NO.
WONG	07.06.04	1 : 100
D4.06.04	07.06.04	US/130-G1(A)



This Drawing and the information contained herein is supplied on the understanding that they are the exclusive property of UNITED SHIP DESIGN SDN BHD. They must not be used or reproduced in whole or in part without permission in writing.

27 MAY 2005